

Overview of Resilience Coalition Proposed Structure and Plan

Reynolds, Director of Resilience and Engagement
cjreynolds@tbrpc.org

Discussion with the
Coalition Steering Committee on Feb.
11, 2019



Today's Meeting

1. Review MOU Goals
2. Review effective coalitions
3. Proposed structure and roles
4. Proposed Work Products and Plan Framework
5. Action items (tasks) for the Steering Committee
6. Discuss the Summit

Resilience Coalition Signing Ceremony



- In October, 25 Local Governments voted to support the regional effort.
- Currently, 27
- Other interested cities

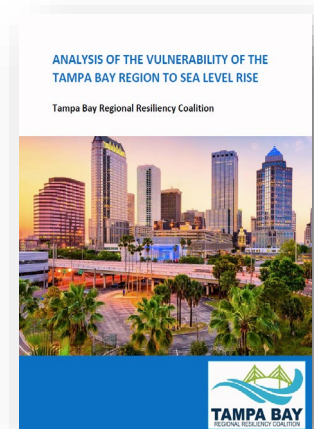


MOU Goals and Objectives

SECTION 2: Regional Cooperation

work together to maximize efforts to mitigate and adapt to the effects of sea-level rise by:

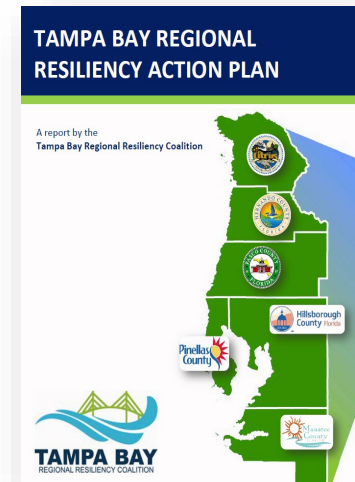
- identifying vulnerabilities to the effects of climate change in communities;
- identifying common vulnerability assessment methodologies;
- planning for mitigation and adaptation actions that will enhance resiliency of their communities;
- learning from each other and prior efforts and planning documents;
- leveraging resources; and
- pursuing public private partnerships.



MOU Goals and Objectives

SECTION 3: Regional Resilience Action Plan

- shall include strategies for coordinated regional preparation for and adaptation to a rapidly changing global environment based on mapping of projected sea-level rise and resulting amplification of localized impacts of hurricanes and tropical storms,
- shall identify funding strategies at the local, state and federal levels for mitigation and adaptation actions to deal with those impacts.

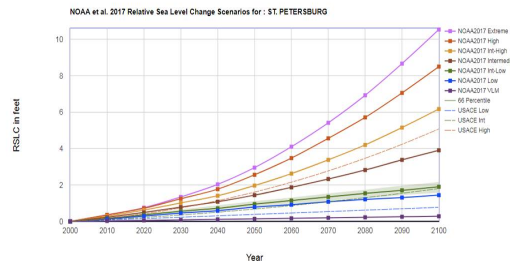


MOU Goals and Objectives

SECTION 4. Science Based Decisions

- base strategies and actions on sound science and technical data,
- work together to identify experts for guidance
- shall use the regional recognized sea-level rise projections produced by the Tampa Bay Climate Science Advisory Panel
- provide guidance on what sea-level rise projections should be incorporated into local planning efforts

Project Title: Tampa Bay
Geographic Location: ST. PETERSBURG
NOAA/2017 Title: 2017 Sea Level Rise
NOAA/2017 Title: 2017 Sea Level Rise
All Percentile Conditions Range for the Intermediate Low Scenario is shown
All values dependent on Year
Lines show the result of interpolation between values shown
USACE SLC Scenarios are shown as shaded areas using the 2009 published SLC rate of 0.0075 feet/year



A Unified Sea Level Rise Projection for the Tampa Bay Region

Tampa Bay Regional Resiliency Coalition



MOU Goals and Objectives

SECTION 5. Legislative Strategy

- develop a legislative strategy which includes a joint position statement recognizing the vulnerabilities, securing enhanced levels of federal participation, and funding in regional adaptation and mitigation programs

SECTION 6. Community Involvement

- engage and involve local businesses, organizations, associations and individuals in developing policies and recommendations which will have the support and commitment of community members and organizations, which is essential for successful implementation.



REVIEW OF EFFECTIVE COALITIONS

Defining Success

Analyzed programs to increase local government resilience and coordination initiatives

- **Rockefeller 100 Resilient Cities**, December 2018 Summary of Cities
<http://www.100resilientcities.org/wp-content/uploads/2018/12/100RC-2018-Urban-Institute-Midterm-Report.pdf>
- **Institute for Sustainable Communities** – analysis of coalitions and compacts around the country
- Published research analyzing structure of Southeast Florida Climate Compact
- Peer-reviewed articles on resilience planning
- Meetings with county staff and other experts

Rockefeller 100 Resilient Cities Evaluation -- Institutionalizing Resilience

1. Hiring Chief Resilience Officer – or establishing resilience staff leads
2. Implemented cross-sectoral and multi-jurisdictional planning
3. Reduced operational silos
4. Increased consistency among internal plans
5. Had ongoing commitment from elected leaders
6. Involved partners from civil, private, and multilateral-sector organizations
7. Changed capital improvement budget review procedures, and leveraged funds for resilience-building efforts

Other Common Themes

- SUCCESS = Implementation of new programs and strategies at the local level – that is consistent across multiple jurisdictions
- There is a need for external technical and policy assistance, and stakeholder coordination support
- Creating a “community of practice” – increases knowledge sharing and leveraging of experience on processes, strategies, tools and policies.
-



PROPOSED STRUCTURE AND ROLES

Resilience Coalition Participants

- **Members**

- local governments sign the MOU

- **Partners**

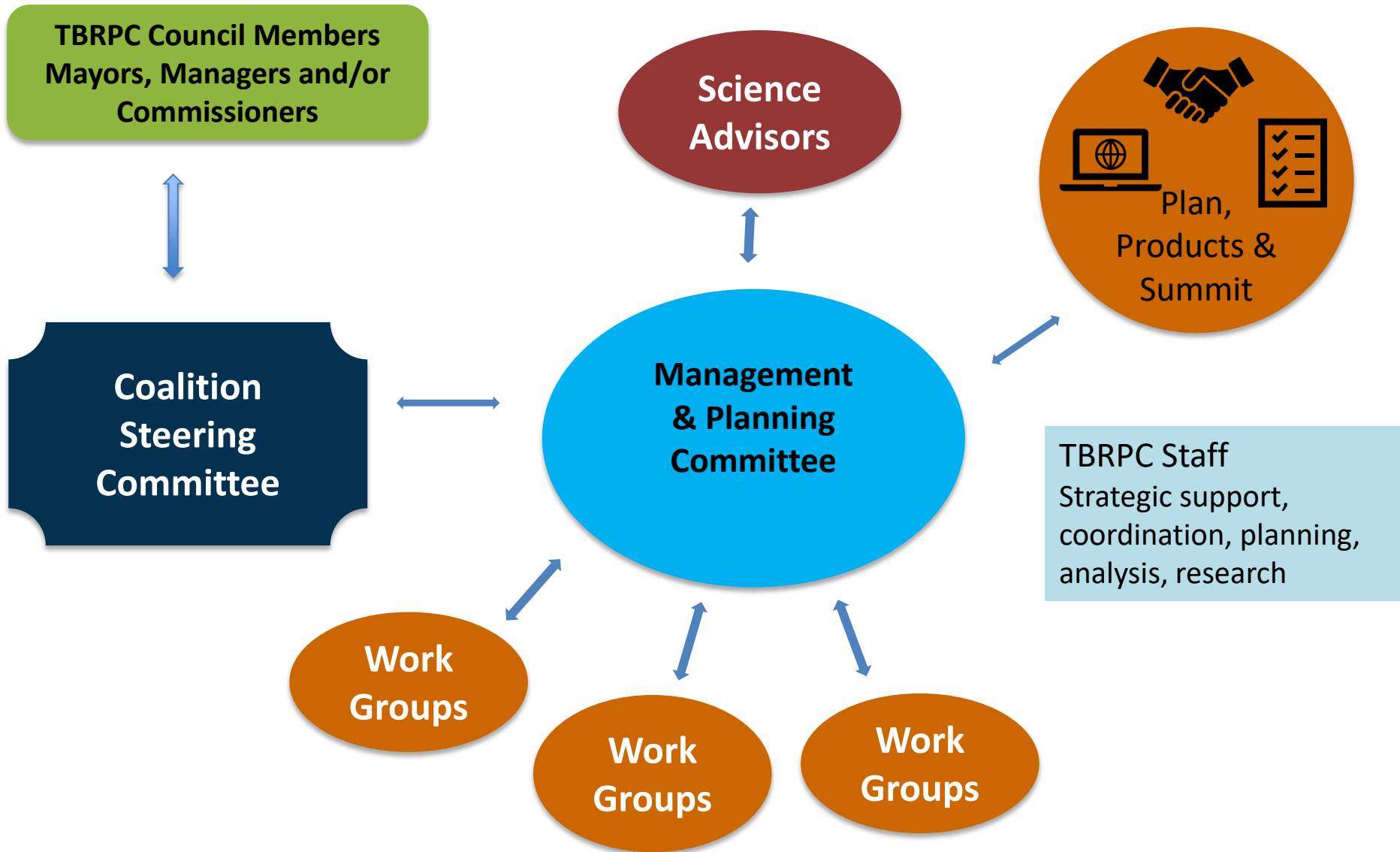
- public and private-sector entities that:

- oversee or manage critical systems;

- can provide data, information, educational, technical and policy expertise;

- engage stakeholders and the community.

Proposed Coalition Structure & Interactions



Proposed Management & Planning Committee

County and Local Government Staff

- ACAs/Senior Staff – TBD by ADMINS Infrastructure, Transportation, Natural Resources, Economic, Housing and Cultural

Multi-Jurisdiction Organization Staff

- SWFWMD, MPOs, TBEP, and others with planning, policy and budget authority for infrastructure, natural resources etc.



Engaging Scientific Experts

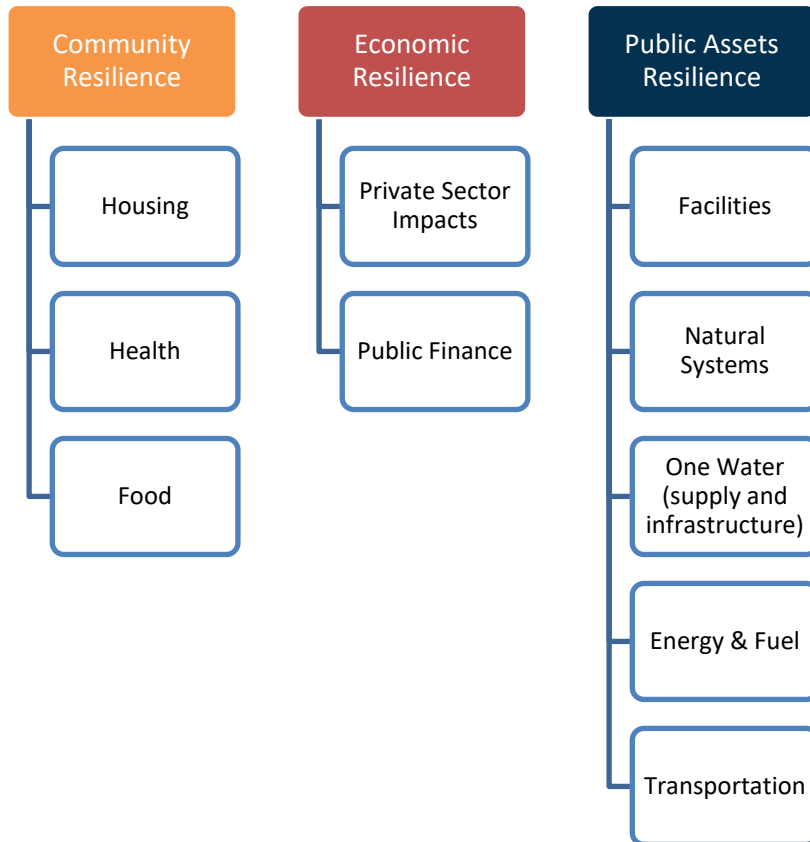
- The Mgmt & Planning Committee will identify the scientific data needs and seek experts to inform the risks, priorities and solutions
 - Experts in organizations (FFMA), voluntary groups (CSAP) Universities and NGOS will be invited to participate as Partners and serve on Workgroups per their expertise



Steering Committee

Proposed Workgroups

Official Workgroup Categories and Subcommittees will be determined by the Management & Planning Committee with input from Partners, SC and TBRPC



- Data management, Policy and Communications and Engagement – integrate/synthesize needs from Workgroups, defines new issues, strategies, sets goals, and Coalition Objectives.
- Develops recommendations, model language and priorities



Actions and Next Steps

Proposed Plan Framework

Regional Resilience Plan will guide/support local implementation and outcomes

1. Encourages development of consistent objectives, goals, policies and updates to existing documents
2. Aligns with existing plans, requirements (i.e. Comp Plan elements, Post-Disaster Redevelopment, Economic Development, Capital Improvement, Local Mitigation Strategy, Tampa Bay CCMP etc, etc.)
3. Addresses state requirements
4. Integrates resilience goals used by federal agencies/funders (i.e. HUD, FEMA, EPA)
5. Includes best practices and metrics from established certification programs (i.e. STAR Communities/LEED, Envision)



Questions?

Unified Regional SLR Scenarios

The Climate Science Advisory Panel (CSAP) is developing the updated, regionalized projections, using the NOAA 2017 data

- CSAP is led by Libby Carnahan UF/IFAS
- CSAP includes USF climate scientists, staff from Pasco, Manatee, Hillsborough and Pinellas County, TBEP, NOAA, TBRPC and private consults
- CSAP will present at the April TBRPC Council meeting
- Information will be reviewed with Management and Planning Committee and Partners
 - recommendations for further analysis to assess vulnerability

Regional Resiliency Action Plan

Integrate climate adaptation & mitigation *strategies* across ALL systems, plans, programs.

Focus Areas:

- ✓ Water Management & Infrastructure
- ✓ Housing & Neighborhood Development
- ✓ Transportation
- ✓ Natural Resources
- ✓ Agriculture & Food Supply Chain
- ✓ Energy & Fuel
- ✓ Economic Development
- ✓ Outreach

