



Resilience Coalition Steering Committee

April 8, 2019

Agenda

- **Call to Order** -- Chair Long
- **Update from the Chair** -- Chair Long
- **Tool for Incorporating Sea Level Rise into Capital Planning** – recommendations/follow up to March 11 meeting by Kelli Hammer-Levy, Division Director, Pinellas County Environmental Management
- **Update and Discussion of Priorities** -- Staff CJ Reynolds
 - Proposed Coalition Workgroups and Priorities: Action: vote to approve
 - Steering Committee Outreach to Business Partners and Organizations
 - Communications
- **Upcoming Resilience Workshops and Presentations**
- **Adjourn**

Capital Planning Tool Update

Initial Workgroups to Build the Foundation

Coalition Priority (partial list)	Workgroup
identify common vulnerability assessment methodologies (MOU)	Risk & Vulnerability Assessment
identify vulnerabilities to the effects of climate change in communities (MOU)	Risk Vulnerability Assessment
use SLR projections produced by the Climate Science Advisory Panel (MOU)	Planning & Policy
provide guidance on what sea-level rise projections should be incorporated into local planning efforts (MOU)	Planning & Policy
Change capital improvement budget review procedures (RCC)	Capital Improvement & Finance
integrate climate goals and commitments into operations and investments (ISC)	Capital Improvement & Finance
Institutionalize resilience, reduce operational silos, increase consistency among internal plans (RCC)	Municipal Excellence

Management & Planning Committee

- Meetings at cities/counties and organizations are ongoing
- Small group discussion to define workgroups and roles
- Planning & Policy Workgroup: Kevin Moran Hillsborough County has offered to lead
- Risk & Vulnerability Assessment Workgroup: Tony Rodriguez, MacDill AFB, Kelli Hammer Levy offered to initiate
- Housing and CRA subcommittee -- Chris Moore supporting resilience Peril of Flood workshop.

Proposed Workgroups

Initial 2019-2020 Foundation Building

Risk & Vulnerability
Assessment

Capital Improvement &
Finance

Data Management

Planning
& Policy

Municipal Excellence

Com. & Engagement

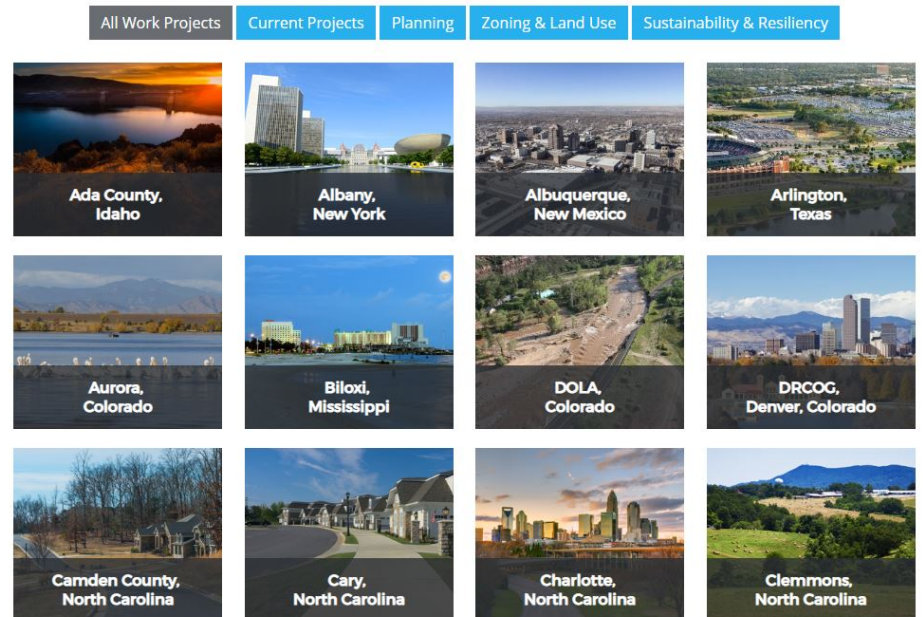
**Include Staff and Partners,
Priority Subcommittees to address crucial topics**

Outreach to Partners/Business

- **Business Engagement**
 - Recruitment and list building efforts
 - TBRPC meetings with Chambers and Development Community,
 - Letter from Susan Glickman, Partner Chair – April 15
- **Yale Culture Cognition & The Nature Conservancy** residents survey May-June
- **USF School of Architecture + Community Design** – recommendations of innovative resilience planning frameworks, May-June
- **APA Suncoast** – pre-meeting with Melissa Dickens, Hillsborough MPO; meeting with members in June to discuss Coalition and participation in Workgroups

Communications

- Begin direct communications “newsletters” email April 15 to all local governments
- Email to
- TBRPC team working on website enhancements: integrate OneBay; create awareness of local government efforts; support Coalition Work Groups etc.
- Facebook, Linked-in strategies

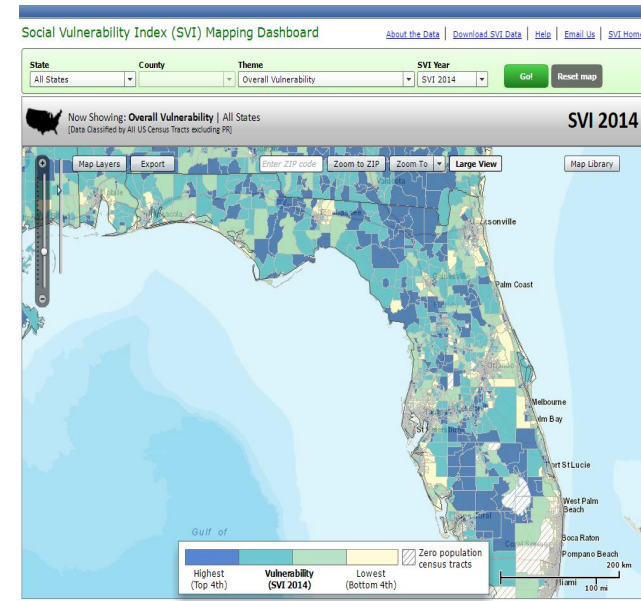


Workshops

1. Nature-based adaptation (03/21/19)
2. Manatee County Workshop (04/30/19)
3. May 1, 9:00-3:30 Intro to Adaptation Finance and Valuation;
4. May 2, 9:00-12:00 review updated SLR scenarios, Climate Science Advisory Panel, Coalition MPC, Workgroups;
5. May 22 9-10:30, [Henk Ovink, Dutch Resilience Expert](#)
6. June, Technical Training Workshop on Affordable Housing and vulnerable populations
7. June Meetings with CRAs

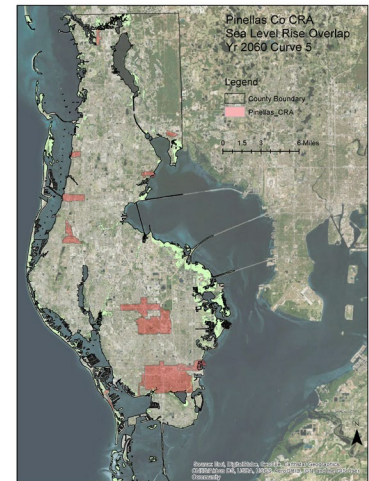
Integrating Social Vulnerability Mapping Workshop

- TBRPC (early June) 1-day training workshop for local governments to integrate social vulnerability factors into long-term climate and sea level rise (SLR) vulnerability assessments.
- The CDC's [Social Vulnerability Index \(SVI\)](#) interactive mapping tool indicates relative vulnerability of each U.S. Census tract.
 - Ranking 15 social factors and groups into 4 themes.
- Evaluate indicators of social vulnerability and map public assets
- Local governments and stakeholder organizations can discuss resilience strategies which include *social, economic, and cultural conditions*.



Resilient Affordable Housing and CRAs meetings

- Meetings with housing policy experts, County and municipal agency and CRA directors to review new SLR and storm risks, discuss public and private housing vulnerability, planning and finance perspectives, and needs.
- Identify opportunities to: 1) increase collaboration; 2) address specific priorities and data needs; and 3) provide recommendations to integrate long-term climate mitigation and resilient adaptation objectives into Housing and CRA plans.



Visual provided by Patrick Andrews