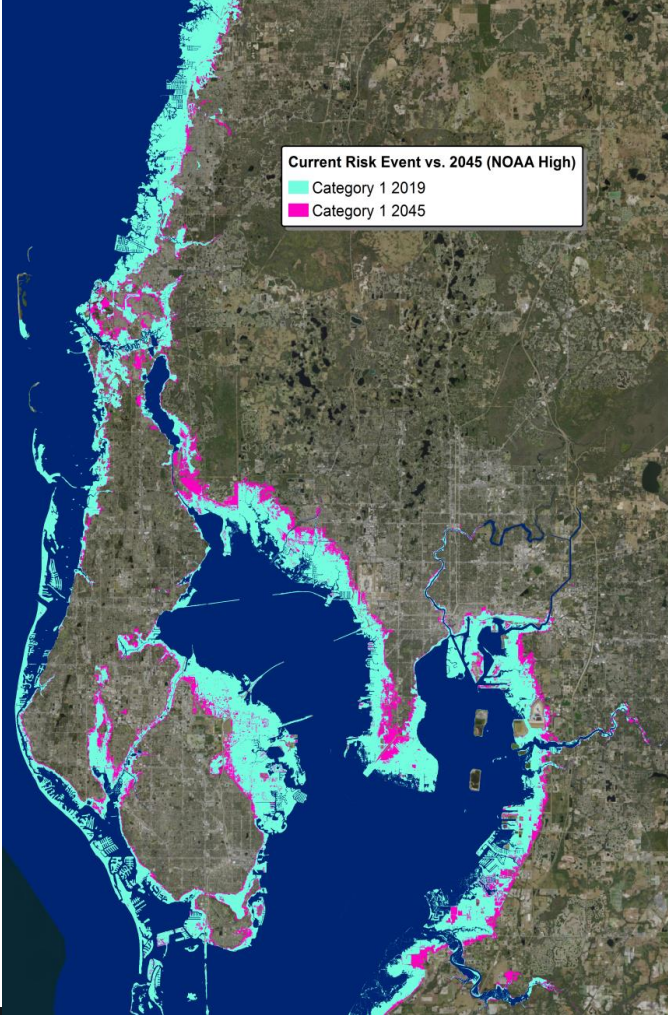


Resilience Coalition Steering Committee Meeting March 9, 2020



Agenda

1. **Call to Order, Chair Long**
2. **Resilience Projects – Staff CJ**
3. **Regional Action Plan and Priorities Discussion**
4. **Next meeting – May**
5. **Adjourn**

Projects Update

- **Community Resilience Workshops**
 - Hernando and Manatee County
- **REACH**
 - meetings with Counties and Cities
- **National Renewable Energy Laboratory Grant**
 - Feasibility and Cost-benefit analysis of Solar+Storage for Emergency
- **Coalition Workgroups**
 - Resilient Shorelines -- developing policy brief
 - Clean Energy survey to go you

MOU Sections Define Our Goals

Section 2: Regional Cooperation

Section 3: Regional Resilience Action Plan

Section 4: Science-based Decisions

Section 5: Legislative Strategy

Section 6: Community Involvement

SECTION 2: Regional Cooperation

work together to maximize efforts to mitigate and adapt to the effects of sea-level rise by:

- a) identifying vulnerabilities to the effects of climate change in communities;
- b) identifying common vulnerability assessment methodologies;
- c) planning for mitigation and adaptation actions that will enhance resiliency of their communities;
- d) learning from each other and prior efforts and planning documents;
- e) leveraging resources; and
- f) pursuing public private partnerships.

SECTION 3: Regional Resilience Action Plan

- a) shall include strategies for coordinated regional preparation for and adaption to a rapidly changing global environment based on mapping of projected sea-level rise and resulting amplification of localized impacts of hurricanes and tropical storms,
- b) shall identify funding strategies at the local, state and federal levels for mitigation and adaptation actions to deal with those impacts.

SECTION 4. Science Based Decisions

- a) base strategies and actions on sound science and technical data,
- b) work together to identify experts for guidance
- c) shall use the regional recognized sea-level rise projections produced by the Tampa Bay Climate Science Advisory Panel
- d) provide guidance on what sea-level rise projections should be incorporated into local planning efforts



RECOMMENDED PROJECTIONS OF
Sea Level Rise
in the Tampa Bay Region

Tampa Bay Climate Science Advisory Panel
Updated April 2019

SECTION 5. Legislative Strategy

- develop a legislative strategy which includes a joint position statement recognizing the vulnerabilities, securing enhanced levels of federal participation, and funding in regional adaptation and mitigation programs

SECTION 6. Community Involvement

- engage and involve local businesses, organizations, associations and individuals in developing policies and recommendations which will have the support and commitment of community members and organizations, which is essential for successful implementation.



PRIORITIES DEFINED AT THE SUMMIT



LOCAL GOVERNMENT ACTIONS (TOP SCORES)

Governance, Resilience Codes, Policy and Zoning

- Smart development - density and sprawl repair **27**

Water

- One water policy **24**

Vulnerability Assessments, Data

- Update planning, land use policies, based on vulnerability assessment analysis **20**

Resilient Shorelines and Open Spaces

- Incentives for green living shorelines and infrastructure - no permit fees **19**
- Hire permanent staff such as resilience officer **11**

Disaster Redevelopment and Recovery Planning

- Housing policies to include long-term redevelopment strategy - code updates, comprehensive strategy, identify resources **19**

Infrastructure – Stormwater Lines, Sewer lines, Utility Lines

- Green infrastructure and public use in master planning - green options, roofs, perm pavement, pipes to parks, and education **17**
- Revisit and restore natural systems **16**

REGIONAL ACTION (Top Scores)

Transportation

- Develop regional mass transit plan and implement system **37**
- Promote regional transportation sales tax **16**

Water

- Comprehensive vulnerability assessment for region **14**

Clean Energy

- Regional data collection efforts (GHG inventory) - coordination with utilities, use framework from other planning efforts for smaller communities **13**

Vulnerability Assessments, Data

- Develop regionally accepted models, methodologies, and best practices **12**
- Publish tool/clearing house for BMP's, maps and visualizations, methodologies, and CSAP integration **10**

Infrastructure – Stormwater Lines, Sewer lines, Utility Lines

- Regional branding - watershed name **10**

High Level Themes

1. Conduct base-line assessments

- Risks and vulnerability (community, infrastructure, economy)
- Energy and green house gas

2. Integrated perspectives on water and adaptation

- Policies, infrastructure, natural resources

3. Smart development strategies

- Recovery, housing, density and sprawl

4. Transportation is linked to resiliency and sustainability

- Coordinated, systems and funding

What Should Our Regional Action Plan Do?

Provide guidance and support for local planning and implementation

- Create positive aspirational vision of resilient communities
- Define consistent objectives, goals, policies
- Integrate resilience goals used by federal agencies/funders (i.e. HUD CDBG, FEMA, EPA)
- Address state requirements (POF, Coastal High Hazard Areas) and such as Comp Plan elements, Post-Disaster Redevelopment, Economic Development, Capital Improvement, Local Mitigation Strategy, Tampa Bay CCMP etc.)
- Includes best practices and metrics from established certification programs (i.e. STAR Communities/LEED, Envision)

Iterative Process

1. MPC Planning Team
2. Steering Committee
3. Meetings with SME Sub-committees -- provide input, write
4. MPC/Local governments collect input from internal stakeholders via existing meetings
5. Workshops to solicit broader input from stakeholders and community

