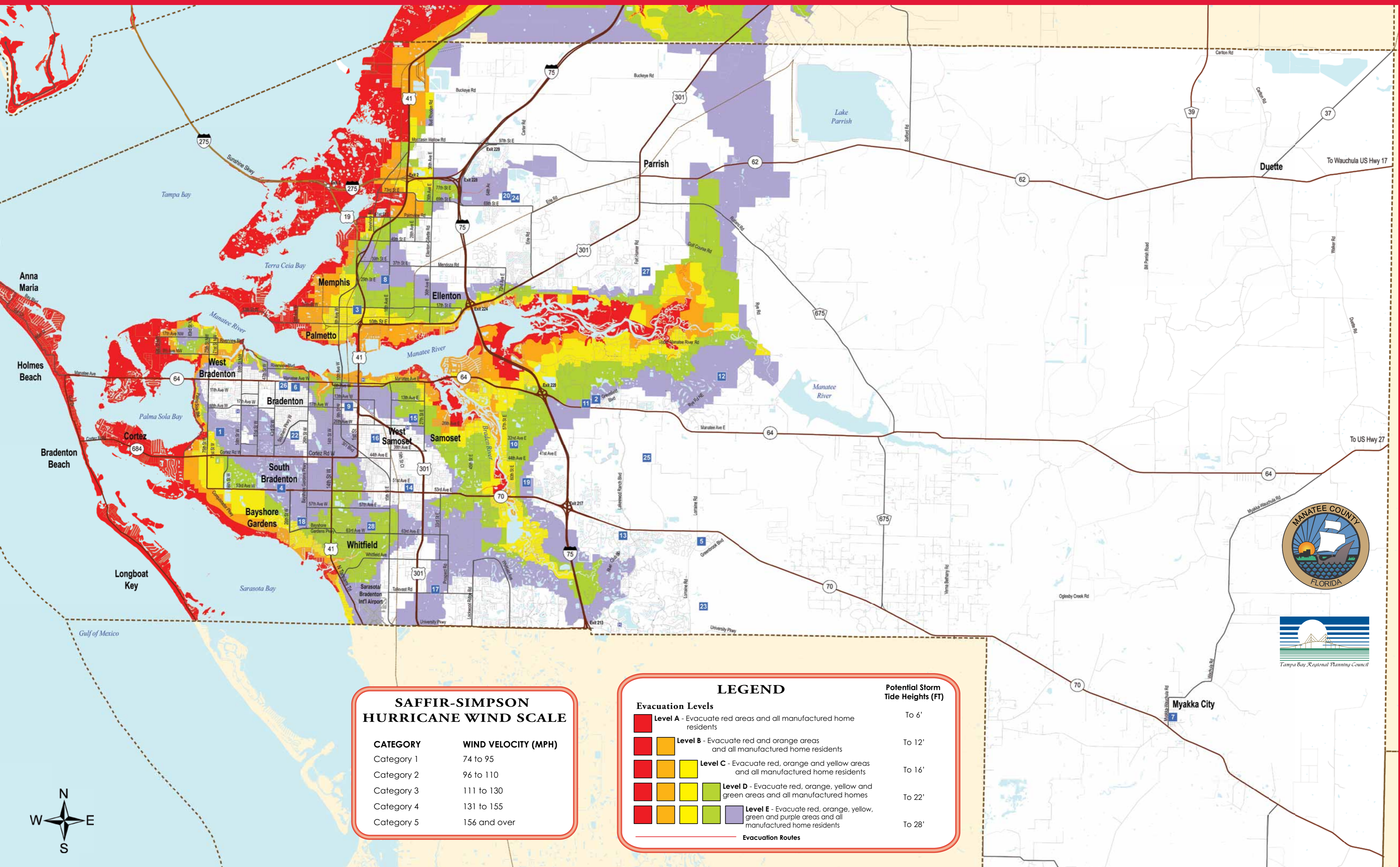


EVACUATION MAP



SAFFIR-SIMPSON HURRICANE WIND SCALE

| CATEGORY | WIND VELOCITY (MPH) |
|------------|---------------------|
| Category 1 | 74 to 95 |
| Category 2 | 96 to 110 |
| Category 3 | 111 to 130 |
| Category 4 | 131 to 155 |
| Category 5 | 156 and over |

LEGEND

| Evacuation Levels | Potential Storm Tide Heights (FT) |
|---|-----------------------------------|
| Level A - Evacuate red areas and all manufactured home residents | To 6' |
| Level B - Evacuate red and orange areas and all manufactured home residents | To 12' |
| Level C - Evacuate red, orange and yellow areas and all manufactured home residents | To 16' |
| Level D - Evacuate red, orange, yellow and green areas and all manufactured homes | To 22' |
| Level E - Evacuate red, orange, yellow, green and purple areas and all manufactured home residents | To 28' |

Evacuation Routes

