



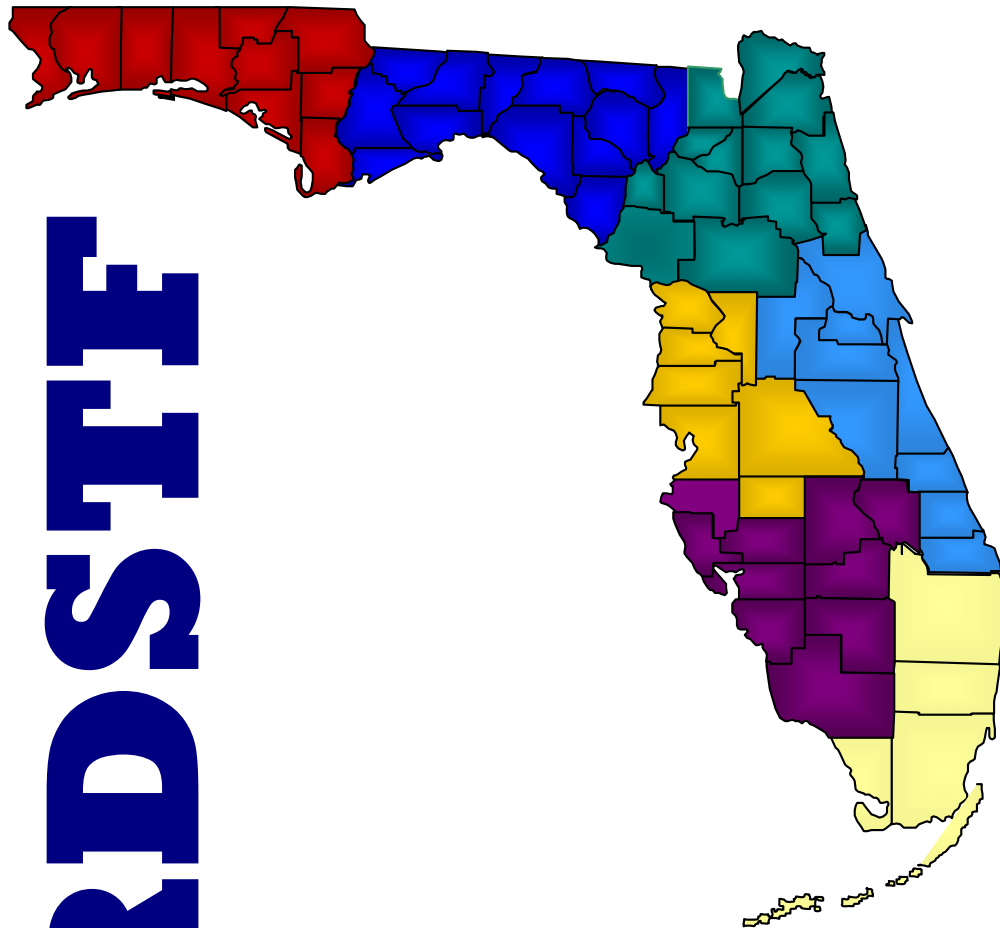
Appendix A-1: RDSTF Regional Multi-Agency Coordination Groups



This page intentionally left blank

STANDARD OPERATIONS GUIDE

Regional Multi-Agency Coordination Groups



RDSTIE

Approved by

DOMESTIC SECURITY OVERSIGHT COUNCIL

AUGUST 2008

Regional Multi-Agency Coordination (MAC) Groups

Table of Contents

MAC Group Protocol Background	1
National Response Framework	
Multi-Agency Coordination Groups	
State of Florida Authority	2
Regional MAC Group Authority	
Florida's Emergency Response Structure and Authority	
Comprehensive Emergency Management Plan Summary	3
Incident/Disaster Classification	
Governor's Executive Order	
State Command Structure	
Emergency Support Functions (ESFs)	
Florida's Domestic Security Structure and Authority	6
RDSTF Response Assets	
Regional Multi-Agency Coordination (MAC) Group Mission.....	7
MAC Group Responsibilities	
Regional MAC Group Staffing.....	7
Regional MAC Group Organizational Structure.....	9
Designee Rosters	
MAC Group Concept of Operations.....	10
Incident Notification Process	
Typical MAC Group Notification	
Regional MAC Group Activation for Non-Declared Incidents	
Delegation of Authority for Declared Incidents	
Resource Request and Coordination Process	
Command and Coordination Relationships	
Transition Options for the MAC Group	13
Recommended Regional MAC Group Staff Support	14
MAC Group - Minimum Levels of Equipment	14
MAC Group – Levels of Training	14

Regional Multi-Agency Coordination (MAC) Groups

MAC Group Protocol Background

Florida's emergency responders have worked aggressively since the 1990s, to enhance the state's emergency preparedness and response capabilities. Driven by the lessons learned in Hurricane Andrew, the terrorist attacks on the World Trade Center, the devastating hurricane seasons of 2004 and 2005, and multiple fires and floods in between, Florida has experienced first-hand the importance of well-coordinated multi-agency response operations.

Following September 11, 2001, many of the state's response initiatives, including the Standard Operations Guide for Florida's Multi-Agency Coordination (MAC) Groups, were focused exclusively on terrorism. The original MAC Group protocol, approved by the Domestic Security Oversight Council (DSOC) on April 20, 2005, established the role of the Regional Domestic Security Task Forces (RSDTFs) during a terrorist attack, but pre-dated the all-hazards planning guidance provided by the U.S. Department of Homeland Security (DHS) in the evolving National Response Framework (NRF) and National Incident Management System (NIMS) publications.

Accordingly, in April of 2008, the DSOC directed a revision of the MAC Group protocol to ensure compliance with the national plans and to maximize the effectiveness of our state's emergency response personnel and resources.

This revised protocol is derived from and consistent with Florida law and established emergency response plans. It has been developed to provide a mechanism for regional resource coordination to more rapidly assist impacted communities when local jurisdictions are overwhelmed and state-level coordination approaches capacity.

National Response Framework Summary

The basic premise of the National Response Framework is that all domestic incidents begin at the local level. As a situation escalates, local resources may become exhausted and additional support may be required. This support can be obtained through local mutual aid agreements, regional response, state response, inter-state mutual aid compacts, and/or assistance from the federal government.

Both the NRF and NIMS have further defined and encouraged states to develop multi-agency, multi-discipline, multi-jurisdictional, cross-regional coordination systems to better prepare for and address the full spectrum of threats that face our nation.

Multi-Agency Coordination Groups

The Multi-Agency Coordination (MAC) Group concept is established by the NIMS as a tool to facilitate incident management support and policy coordination when an incident involves multiple disciplines or jurisdictions.

The primary functions of MAC Groups are to:

- Support incident management policies and priorities.
- Facilitate logistical support and resource tracking.
- Inform resource allocation decisions using incident management priorities.
- Coordinate incident-related information.
- Coordinate and resolve interagency and intergovernmental issues regarding incident management policies, priorities, and strategies.

MAC Groups facilitate expanded regional collaboration during a crisis by providing a NIMS-compliant strategic resource coordination structure for agencies from a variety of jurisdictions within a region.

State of Florida Authority

Regional MAC Group Authority

The specific authority that guides this MAC Group protocol and its general procedures are provided by:

Chapter 252, Florida Statutes, the State Emergency Management Act

Chapter 23, Part I, Florida Statutes, the Florida Mutual Aid Act

Chapter 943, Florida Statutes, Domestic Security/Terrorist Event

Chapter 381, Florida Statutes, Public Health: General Provision

Chapter 570, Florida Statutes, Agriculture, Horticulture, and Animal Industry

Chapter 870, Florida Statutes, Affrays; Riots; Routs, Unlawful Assemblies

The State of Florida Comprehensive Emergency Management Plan (CEMP)

Executive Order 80-29, Disaster Preparedness

Florida's Emergency Response Structure and Authority

Florida's all-hazards emergency response structure is built on a strong foundation of interdisciplinary and interagency regional collaboration and a very robust local, regional and statewide mutual aid response capability. Three primary statutory provisions establish the governance framework and operational response plans and structure for Florida:

F.S. 252, The State Emergency Management Act which mandates the development of the Florida Comprehensive Emergency Management Plan (CEMP);

F.S. 23, The Florida Mutual Aid Act which mandates the development the Florida Mutual Aid Plan for Law Enforcement; and

F.S. 943, The Florida Department of Law Enforcement Act, amended post 9/11, mandating the creation of the Regional Domestic Security Task Forces.

Together they provide firm overarching guidance consistent with the National Response Framework to plan for and respond to any type of natural or manmade incident regardless of its size or magnitude.

Comprehensive Emergency Management Plan Summary and ESF Structure

Chapter 252, F.S., outlines the statutory authority that gives the Florida Division of Emergency Management (FDEM) and other state agencies their authority to respond in support of local government. The Comprehensive Emergency Management Plan (CEMP) is the planning document under which all of the state agencies organize their support for preparation, response, recovery, and mitigation of all emergencies and disasters that may affect Florida. The CEMP also outlines the response and recovery activities with volunteer organizations active in disasters, and the business community, to reduce the effects of an emergency and/or disaster. Each county has its own emergency management office partially funded by the state, and each county has its version of the CEMP, which complements the state plan.

The CEMP is based on the premise that the local government may face a disaster beyond its capability. Therefore, the local state of emergency is the device that local government uses to indicate they are facing a situation that may warrant assistance. The state of emergency is good for 7 days and allows local government to request state or federal resources. Federal assistance is requested and coordinated through the Federal Emergency Management Agency.

The CEMP is divided into three sections: the Basic Plan, Emergency Support Function (ESF) appendices, and Hazard Specific Annexes. Note: Florida's Regional MAC Groups as defined in this protocol will be recognized as authorized regional coordination entities in the CEMP.

Incident/Disaster Classification

Chapter 252.35(a), F.S., requires the CEMP to address minor, major and catastrophic disasters. These levels are defined as:

1. **Minor Incident/Disaster:** Any disaster that is likely to be within the response capabilities of local government and results in only minimal need for additional assistance. *(NIMS Incident Classification Type 5 or Type 4)*

Minor disasters typically can be managed by the local impacted jurisdiction with the assistance of county-to-county or in-region Mutual Aid as provided by both the Florida Law Enforcement Mutual Aid Plan and the Florida Fire Chiefs Association (FFCA) Statewide Emergency Response Plan (SERP). The State Emergency Operations Center (SEOC) will be notified and will monitor the event but will not likely activate. Level 3 is the normal day to day monitoring where County Warning Points (CWPs) notify the State Warning Point (SWP) of various incidents or events.

2. **Major Disaster:** Any disaster that will likely exceed local capabilities and may require a broad range of state and federal assistance. The Federal Emergency Management Agency (FEMA) will be notified and potential federal assistance will be predominantly recovery-oriented. *(NIMS Incident Classification Type 3 or Type 2)*

Major disasters may exceed the ability of local government to handle with local mutual aid agreements and will generally require at least some state resource support, including law enforcement, communications support, and the movement of both in-region and out-of-region assets to respond to the disaster. The SEOC may move to a Level 2, partial

activation, and may have planning, resource support, and some of the affected ESFs to support the response. Level 2 may be activated when one or more of the ESFs are involved in supporting local government for an extended period of time.

3. Catastrophic Disaster: Any disaster that will require massive state and federal assistance, including immediate military involvement. Federal assistance will involve response as well as recovery needs. *(NIMS Incident Classification Type 1)*

A catastrophic disaster will initiate a Level 1 activation of the SEOC, which includes all 18 ESFs response to the SEOC, and all elements of the CEMP in support of local government. Level 1 is full activation and may include federal response to a disaster event affecting the state.

Governor's Executive Order

The Governor will issue an Executive Order declaring that a State of Emergency exists, thereby activating the CEMP. The Executive Order authorizes and releases state resources to respond in support of local government and may include authorization to activate the National Guard, lifting tolls on the roadways, and suspending purchasing procedures to streamline support to local government. Once the Governor executes an Executive Order, consideration will be given to requesting a Federal Disaster Declaration.

In summary, the CEMP establishes the framework for how local, state and federal counterparts work together to handle disasters and defines the process for requesting resources, where the resources are to come from, and how the resources will to be paid for in response to declared incidents. Note: no reimbursement system is established for non-declared incidents.

State Command Structure

The Governor, by state constitution and state statute, assumes direct operational control over all or any part of the emergency management functions during a state of emergency declared through an Executive Order and has the ultimate responsibility for major disasters affecting the State of Florida:

- The Governor, through an Executive Order designates a State Coordinating Officer, usually the Florida Division of Emergency Management (FDEM) Director.
- State Command may include the designated responsibilities for crisis management through the Florida Department of Law Enforcement (F.S. 943) and consequence management through the Division of Emergency Management (F.S. 252).
- The Governor may designate the State Health Officer to coordinate biological or radiological response efforts (F.S. 381), or the Department of Agriculture and Consumer Services authorized representative to coordinate food safety and contamination issues (F.S. 570).
- The SEOC will be activated at the appropriate level in support of State Command. All necessary ESFs will be activated according to protocol.
- The Joint Operations Center (JOC), if established, has the responsibility of coordinating the federal response for the event. The size and location(s) of the incident will determine the location of the JOC.

Emergency Support Functions (ESFs)

To facilitate effective operations, the CEMP adopts a functional approach that groups the types of assistance into 18 ESFs, each headed by a lead agency or organization which has been selected based on its authority, resources and capabilities in that functional area. The primary agency appoints an Emergency Coordination Officer (ECO) to manage that function in the SEOC.

Collectively the 18 ESFs comprise the State Emergency Response Team (SERT). Each of the ESFs are described in appendices to the Basic Plan and contain a method of operation and the responsibilities of the primary and support agencies that will respond in support of local governments. Each ESF is led by a state agency, but is supported by a large number of support agencies. These support agencies may be other state agencies, volunteer agencies, non-profits, or associations which are prepared to assist with personnel or equipment.

The chart below depicts each ESF and the designated lead agency/organization:

ESF	Function	Lead Agency
1	Transportation	Department of Transportation
2	Communications	Department of Management Services Division of Communications
3	Public Works and Engineering	Department of Transportation
4	Fire Fighting	Department of Financial Services State Fire Marshal
5	Information and Planning	Division of Emergency Management
6	Mass Care	Department of Business and Professional Regulation
7	Resource Support	Department of Management Services Division of Purchasing
8	Public Health and Medical	Department of Health Division of Emergency Medical Operations
9	Search and Rescue	Department of Financial Services State Fire Marshal
10	Hazardous Materials/Environmental Protection	Department of Environmental Protection
11	Food / Water	Department of Agriculture and Consumer Services
12	Fuel /Energy	Department of Environmental Protection Public Service Commission
13	Military Support	Florida National Guard
14	Public Information	Division of Emergency Management
15	Volunteers and Donations	Volunteer Florida
16	Law Enforcement and Security	Florida Department of Law Enforcement
17	Animal Issues	Department of Agriculture and Consumer Services
18	Business Industry And Economic Stabilization	Office of Tourism and Economic Development

Florida's Domestic Security Structure and Authority

The Regional Domestic Security Task Force (RDSTF) is an important component of Florida's domestic security structure. With Regional Operation Centers in Pensacola, Tallahassee, Jacksonville, Orlando, Tampa, Fort Myers, and Miami, the RDSTFs provide coordination of effort among emergency responder agencies in the preparation for, prevention of, response to, mitigation of, and recovery from a terror attack.

The overall mission of the RDSTF is to protect the people of Florida from a terrorist attack, and, if attacked, to provide response assistance in the most efficient manner. Based on the guidance in 943.0312, F.S., the RDSTF operates under two conditions: prevention of a terrorist attack and coordination of the initial emergency services response to a terrorist attack.

The focus of this protocol is to establish the authority, activation and role of Regional MAC Groups as a coordination entity for events and all-hazards incidents (declared or non-declared) which may require first-responder emergency services response and resource coordination.

The RDSTF co-chairs and discipline committee chairs representing Law Enforcement, Fire/Rescue, Emergency Management, Health/Medical and others as required, will establish the Regional MAC Groups in accordance with the following guidance.

RDSTF Response Assets

Florida's strategically-located special operations teams and other response assets can be deployed during all-hazards incidents. Enhanced RDSTF Response Teams and assets include but are not limited to:

Fire-based:

Hazardous Materials Teams, Urban Area Search and Rescue Teams, Technical Rescue Teams, Decontamination Teams, Incident Management Teams, Florida DEP Emergency Response Team, enhanced CBRNE detection equipment caches and Mutual Aid Radio Caches (MARC)

Law Enforcement-based:

SWAT teams, Hazardous Devices Teams (HDT), Forensics Response Teams (FRT), Waterborne Response Teams (WRT) and Law Enforcement Security Teams

Health/Medical-based:

Mass-casualty Teams, State Medical Response Teams, Epidemiological Response Teams, Environmental Health Strike Teams, Special Needs Management Teams and Alternate Medical Treatment Site Teams

Florida National Guard:

44th Civil Support Team and other FLNG units

Public Information-based:

PIO Deployment Database and Mobile Joint Information Centers

Interoperable Communications:

Emergency Deployable Interoperable Communications Systems (EDICS), Emergency Deployable, Wide-Area Remote Data Systems (EDWARDS) and Florida Interoperable Network (FIN)

Regional Multi-Agency Coordination (MAC) Group Mission

The mission of Florida's Regional MAC Groups is to function as a regional coordination entity to support local Incident Command in coordination with the County Emergency Operations Centers (CEOCs) and the SEOC, by assisting with the identification and deployment prioritization of regional resources.

MAC Groups are all-hazards, multi-discipline, multi-jurisdictional regional resource-coordinating elements generally comprised of regional representatives from un-impacted jurisdictions or first responder disciplines whose resources are committed to the incident.

When activated, each MAC Group will be organized according to the Florida Emergency Support Function (ESF) structure and will coordinate with the CEOCs and the SEOC, to provide resource coordination and support within its designated region. MAC Groups will primarily coordinate the initial emergency services resource response for ESFs 4, 9, 8, 10 and 16, and other ESF assets as assigned.

The Regional MAC Group initiative will be implemented statewide, utilizing the all-discipline organizational structure of the RDSTFs. MAC Groups will be identified by the RDSTF numeric designation (i.e., Region 3 MAC Group).

MAC Group Responsibilities

The Regional MAC Group provides an in-region resource coordination element for the SEOC to perform the following minimum functions:

- ACTIVATE and operate in support of the incident,
- ASSESS the situational impact and need for resources,
- REPORT situational awareness to the SEOC,
- COORDINATE the regional response deployment and demobilization, and
- DEPLOY regional assets to augment local resources in coordination with CEOCs.

The MAC Group, in conjunction with local emergency managers, will evaluate available resources in the affected area and coordinate the request and deployment of in-region assets. If the event exceeds the resources available at the regional level, the MAC Group shall coordinate requests for additional out-of-region resources with the CEOC and the SEOC.

The MAC Group is not designed to replace tactical Incident Command or function as an Incident Management Team (IMT).

Regional MAC Group Staffing

Regional MAC Groups will typically be comprised of participating RDSTF agency members or designated association representatives from the primary first responder disciplines: Law Enforcement, Fire Rescue/EMS/SAR/HazMat, Emergency Management, and Public Health/Medical. Other regional discipline or ESF representatives (Communications, Public Works, etc.) may be included, depending on the type of incident.

MAC Group representatives are top management level personnel who are knowledgeable of available in-region resources and response capabilities, and are fully authorized to commit their agency resources and funds. They, as a group, will prioritize incidents and allocate scarce resources based on resource requests and availability, policies and agreements, and situation status in conjunction with incident command and emergency management.

The MAC Group may coordinate by telephone or other means, or may establish a physical operation at an independent location or within a CEOC in consultation with local emergency management.

Regional MAC Group members will include the following designated ESF discipline representatives in accordance with the CEMP and referenced Mutual Aid Plans:

Florida Mutual Aid Plan - Law Enforcement Guidelines for Emergency Response (LE-MAP):

ESF 16 – Law Enforcement

The FDLE Regional ASAC will coordinate all state and local law enforcement mutual aid resource requirements in coordination the Florida Sheriffs Association (FSA) Task Force and Florida Police Chiefs Association (FPCA) representatives assigned to the SEOC. An FDLE Special Agent Supervisor (SAS) or Special Agent (SA) will be assigned as a liaison to the impacted sheriff's/police command post or County EOC to monitor and assess the event, the incident response, and to confirm law enforcement response needs.

Note: Florida National Guard (FLNG) resources (ESF 13 – Military Support) are activated for law enforcement support services only through a Governor’s Executive Order. Once deployed, FLNG assets may be assigned to the recipient law enforcement agency or the regional state law enforcement coordinator.

Florida Fire Chiefs Association (FFCA) Statewide Emergency Response Plan (SERP):

Note: The FFCA and Division of State Fire Marshal have entered into an MOU with the Florida Department of Environmental Protection (FDEP) and Department of Health (FDOH) relating to periods of activation of the SEOC. Under this agreement, ESF 4/9, ESF 8 and ESF 10 will work together on the deployment of various response resources including the FDEP emergency response personnel and the statewide multi-agency Environmental Response Team. Any request for these resources will be coordinated in accordance with the SERP.

ESF 4/9 – Firefighting/Search and Rescue

The FFCA Regional SERP Coordinator will coordinate emergency assistance operations for Firefighting and Search and Rescue resources in the affected areas.

ESF 10 – Hazardous Materials

The FFCA Regional SERP Coordinator or designee will coordinate fire-based HazMat Response Teams as well as DEP response assets pursuant to the SERP.

ESF 8 – EMS

The Regional EMS Liaison will coordinate fire and non-fire based EMS resources in the region in concert with ESF 8 Public Health and the FFCA Regional SERP Coordinator.

ESF 8 – Public Health/Medical

The Public Health/Medical liaison will coordinate ESF 8 Medical Response Teams and resources.

Florida Comprehensive Emergency Management Plan (CEMP):

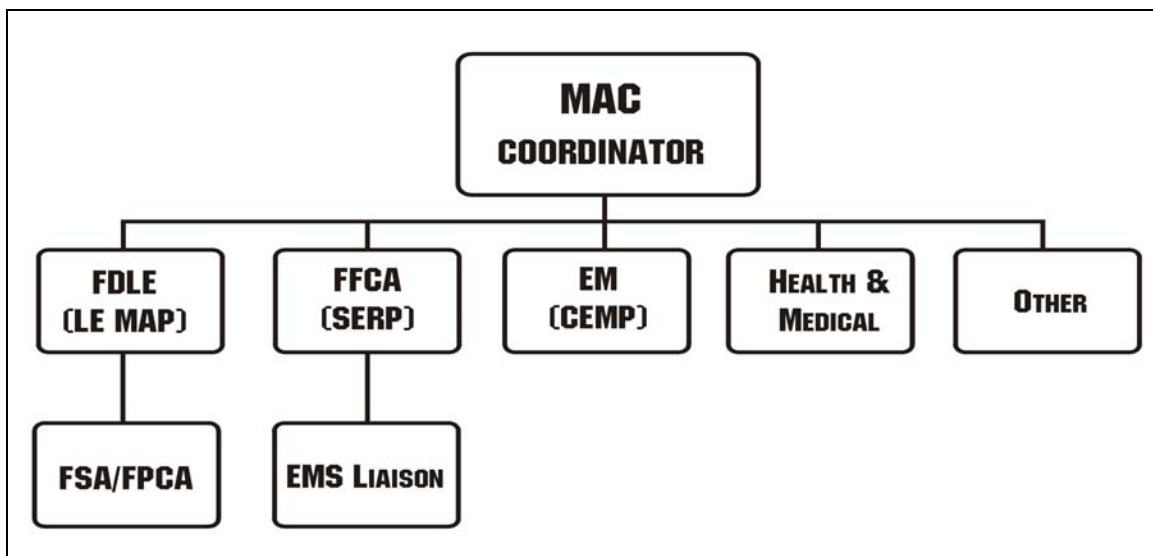
Emergency Management Coordination

Depending on the location and nature of the incident (terrorism or other hazards), an at-large Emergency Management Coordinator will be designated from within the regional Emergency Management community to host and/or support the Regional MAC Group. The Emergency Management Coordinator will support the resource coordination process and, if necessary, assist the impacted CEOCs with logistical and resource planning support for the incident in coordination with the assigned forward FDEM Regional Coordinator. The Regional MAC Group EM Coordinator will assist with the regional coordination of all other ESF support functions assigned to the Human Services, Infrastructure, and Operations Support Branches under the Operations Section of the SEOC.

Regional MAC Group Organizational Structure

Typical MAC Group Staffing is depicted in the chart below; however, actual staffing will be dependent upon the size, nature and complexity of the incident. Once activated the MAC Group organization may include the following:

- A MAC Group Coordinator to be designated by RDSTF leadership from the appropriate discipline depending on the incident type.
- Designated discipline liaisons to respond to the incident scene(s) and to the CEOCs as appropriate to confirm resource requirements and coordinate resource requests being submitted to the SEOC.



Designee Rosters

Each RDSTF Response Plan should designate at least 3 representatives for each ESF/discipline component listed above. A MAC Group Roster with current contact information for each designee should be maintained by the RDSTF and provided to the FDLE Office of Domestic Security and Intelligence and the Florida Division of Emergency Management.

MAC Group Concept of Operations

Incident Notification Process

When an incident occurs, the County Warning Point (CWP), typically the 911 Center, contacts the State Warning Point (SWP). The SWP is staffed 24-hours a day and is responsible for contacting an operations duty officer for the Division of Emergency Management. The SWP provides the state a single point from which to disseminate information and warnings to governmental officials (federal, state and/or local) that a hazardous situation could threaten the general public.

The duty officer evaluates circumstances of the event, contacts the appropriate Emergency Support Functions (ESFs) and other government officials, including the Governor's staff, and briefs them on the information that is available. The ESFs then contact and support the local government based on mission tasking. Additional coordination and/or activation of the SEOC will be determined by SEOC officers and may include the FDEM Director.

Developing, or existing emergency conditions, which should be reported to the SWP via the CWP, include those that have, or may result in, multiple loss of life, environmental or property damage, and evacuation of a populated area. Warnings and notifications will be initiated by the SWP in accordance with "The State Warning Point Operating Procedures for Notification."

Typical MAC Group Notification

- Local Incident Commander requests assistance.
- Local EOC and County Warning Point notified according to existing protocol.
- County Warning Point (911 Center) notifies State Warning Point.
- State Warning Point contacts Emergency Support Function 16 (FDLE).
- ESF 16 will activate as directed by the SEOC and will verify that the FDLE SAC or designee of the RDSTF has been notified.
- The FDLE SAC will activate the MAC Group through a conference call or other appropriate communications to RDSTF leadership.
- Notification of MAC Group activation will be issued by the SEOC including identification of the MAC Group Coordinator.
- If applicable the MAC Group Coordinator will notify the Regional Specialty Team Coordinators to be on stand-by.

Regional MAC Group Activation for Non-Declared Incidents

For *non-declared* incidents or pre-planned events, the decision for MAC Group activation will vary depending on the event or incident. The RDSTF Co-Chairs, in coordination with local emergency management may activate a Regional MAC Group to support any event or incident, consistent with existing laws and mutual aid plans set forth in the authority section above.

Regional MAC Groups may be activated:

- When planning for large or high profile public gatherings.
- When a chief executive requests the activation of the MAC Group.
- When more than one jurisdiction becomes involved in the incident response.
- When a Unified Command is established at the incident scene.
- When the incident could expand rapidly and involve cascading events.
- When similar past events have required multi-agency coordination.
- When intelligence and information indicates threatened or imminent incidents such as mass immigration, health and medical emergencies, civil unrest or natural disasters.

All MAC group activations will be in accordance with the Statewide Mutual Aid Plan and authorized by an appropriate government representative of the impacted jurisdiction. All costs associated with activation will also be in accordance with the Statewide Mutual Aid Plan.

Note: Upon the issuance of an Executive Order establishing a *declared* disaster by the Governor, all emergency response is coordinated pursuant to Chapter 252, F.S. and the CEMP.

Delegation of Authority for Declared Incidents

Once the Governor has issued an Executive Order, if directed by the Commissioner of FDLE, Director of FDEM or State Command, the SEOC may empower a Regional MAC Group with Resource Tasking Authority. The MAC Group will then have immediate authority to assess needs and deploy available in-region resources as requested to support the incident needs. The SEOC may assign additional assets to the MAC Group for coordination in response to requests from local EOCs. All resource tasking will be performed in coordination with local CEOCs using the SEOC's Resource Management System.

Resource Request and Coordination Process

Regional assets will be deployed, as needed, to augment local response consistent with the State CEMP and authorities listed above. All resource requests are mission tasked through the SEOC from the CEOCs. Mission tasking is critical to ensure that the appropriate entity is requesting necessary resources, and that questions of size, date, time, and location of delivery are answered. The SEOC will coordinate all requests with the Regional MAC Group to ensure the nearest, most appropriate resource is tasked with the mission.

- All resource requests are submitted to the SEOC and must originate from a CEOC or SEOC authorized source.
- The MAC Group in cooperation with CEOCs will monitor the deployment of local assets or those requested through Mutual Aid in accordance with existing plans.
- The MAC Group will also coordinate deployment of *in-region* assets in support of CEOCs in accordance with existing plans.

Requests for *out-of-region* assets must be coordinated through the SEOC. In such cases, the out-of-region resources may be assigned to the MAC Group to be deployed and managed throughout the region as determined appropriate to support the incident. The MAC Group will also track resources throughout the incident and may re-assign resources within the region, once released by the local Incident Command, as appropriate. As the incident scales down, the MAC Group will be responsible for developing a Demobilization Plan to direct the safe and timely return of resources assigned through the MAC Group to their home agency.

Command and Coordination Relationships

The two charts below illustrate the resource request process outlined above and the relationships of the various coordinating entities to the local Incident Command and the Incident Management Teams (IMTs).

Direct resource requests are depicted in the charts below by the solid black lines. The resource coordination activities of the Regional MAC Group are depicted by the red broken lines. Chart 1 shows the relationship of the MAC Group during a partial or full activation of the SEOC:

Partial or Full Activation for *Minor or Major* Incidents (NIMS Incident Type 5, Type 4, Type 3)

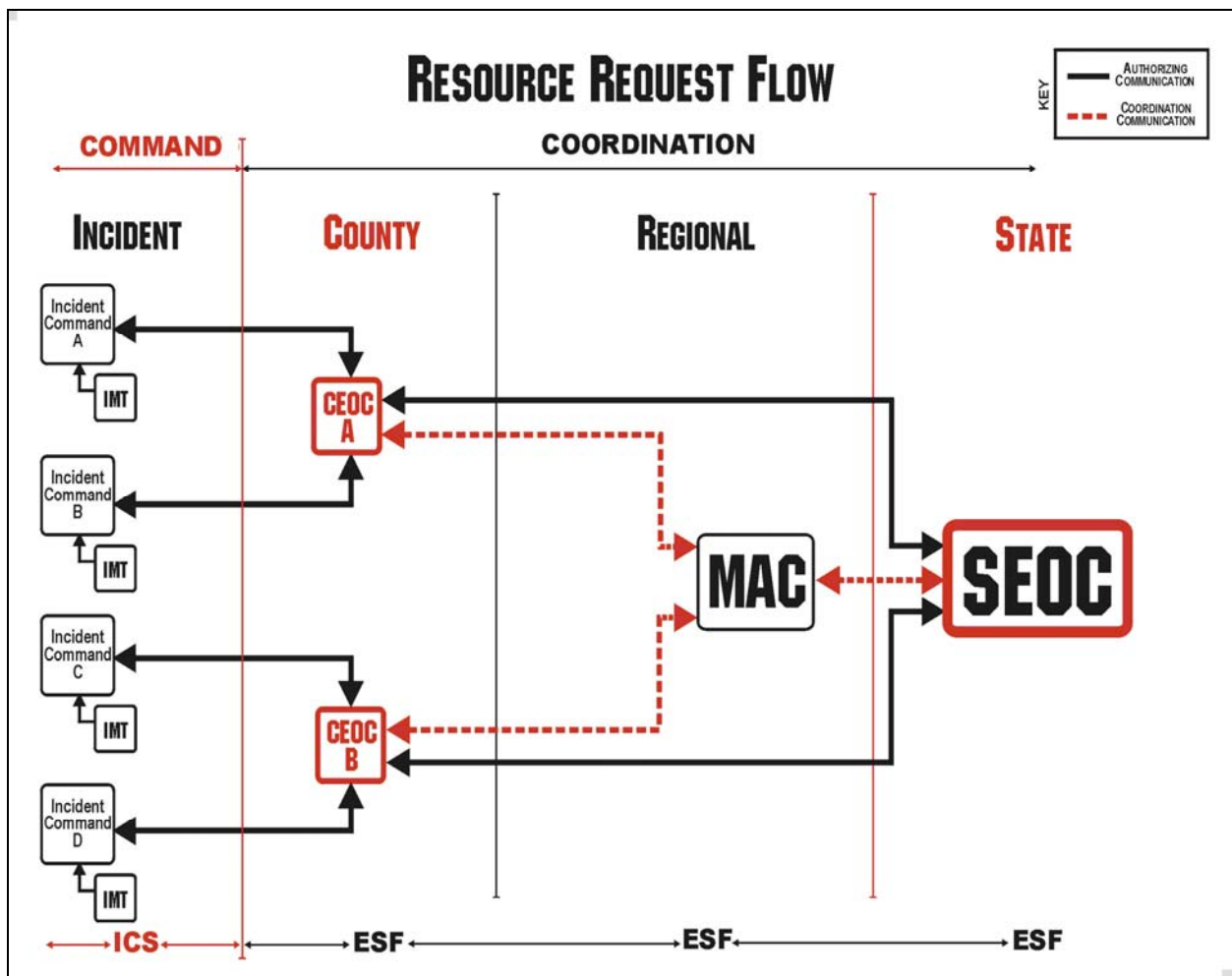


Chart 1

Chart 2 shows the relationships during a full activation of the SEOC for a catastrophic incident where the SEOC functions (all or selected ESFs) would move forward to the impacted region:

Full Activation with Forward SERT (FSERT) Component for *Catastrophic* Incidents
(NIMS Incident Type 2, Type 1)

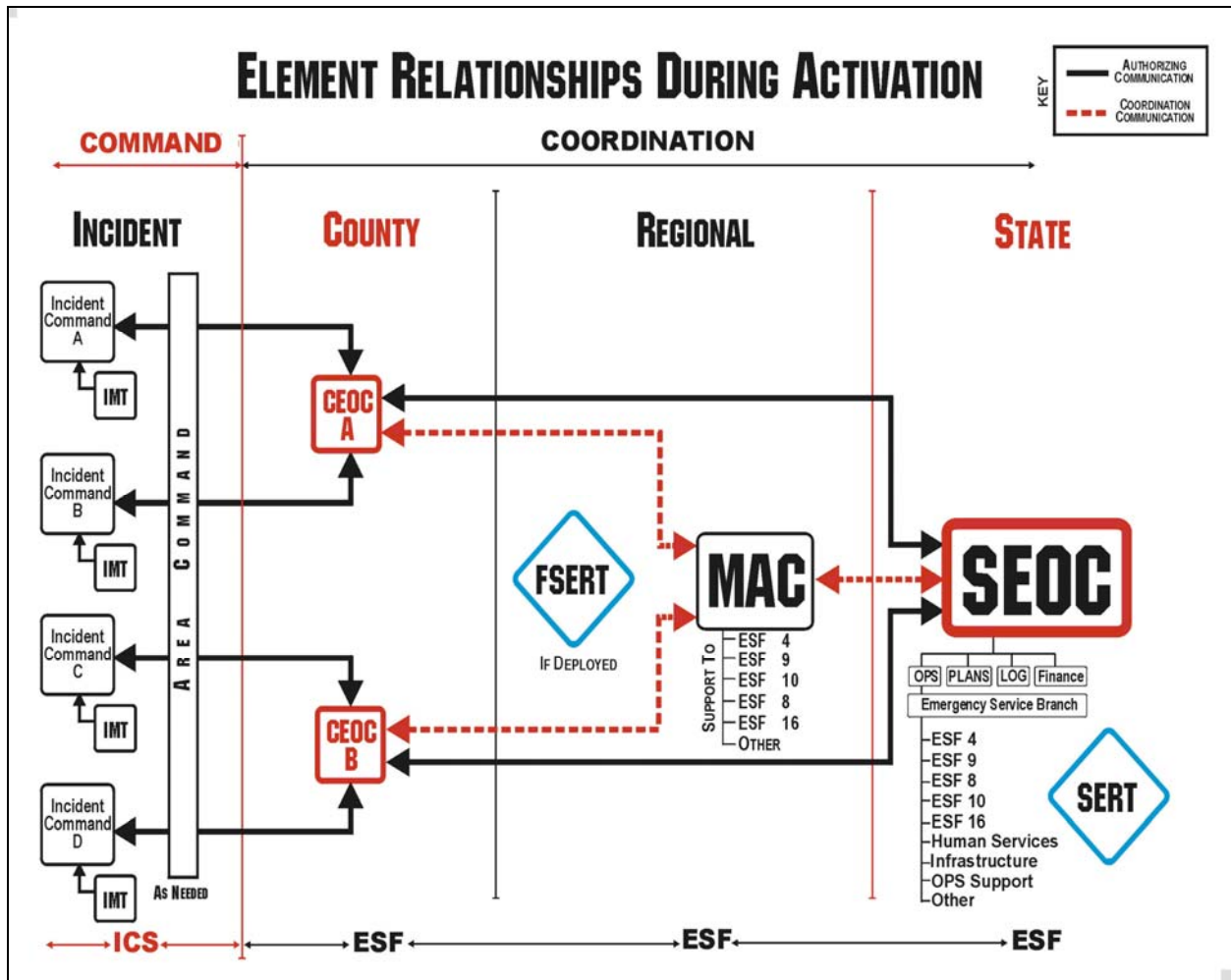


Chart 2

Transition Options for the MAC Group

The size and function of the MAC Group will be determined by incident complexity:

Expansion: If the incident remains unstable and requires continued regional resource coordination assistance, the MAC Group may add staffing as needed to meet the demands.

FSERT Integration: The SEOC Emergency Response Team (SERT) may establish a Forward State Emergency Response Team (FSERT) and transfer personnel, authority, or both, to the incident location. In which case, the ESF coordination elements of the MAC Group may be transitioned into the Emergency Services Branch/Operations Section of the FSERT. (Chart 2 above)

Demobilization: If the incident can be contained and coordination returned to the State or local EOCs, the MAC Group may scale down or demobilize completely.

Recommended Regional MAC Group Staff Support

Personnel from the Florida Department of Law Enforcement, Florida Fire Chiefs Association, and Florida Division of Emergency Management will provide technical (i.e. Resource Management System), analytical, and administrative support for the Regional MAC Group. Support staff from all regional discipline leadership entities will be specified in each Regional Response Plan. The Regional MAC Group should be located at an appropriately equipped facility capable of supporting Regional MAC Group operations. Possible locations should be predetermined and included in the region-specific plans.

Analyst and administrative support staff duties will include:

- Maintaining up-to-date lists of regional specialty teams and current inventories of other regional response assets available for deployment.
- Tracking of resource request and deployment status utilizing the SEOC's Resource Management System, ensuring messages are complete and clearly stated.
- Maintaining an event log and time line to assist the MAC Group Coordinator with situational awareness reports, decision-making, and communication during the event.
- Coordination of relevant intelligence information among the Regional MAC Group, RDSTF Investigation and Intelligence Unit, FDLE Office of Statewide Intelligence, and the Joint Terrorism Task Force (JTTF).
- *ThreatCom* messaging – notification/update of events and sharing of tactical information
Prepare briefs for leadership regarding the incident status.

MAC Group - Minimum Levels of Equipment

MAC Groups will respond to all incidents and events as quickly as possible with RDSTF issued equipment, other required personal equipment, and current regional resource inventories with relevant emergency contact numbers.

MAC Group – Levels of Training

All MAC Group members, liaisons and support personnel will be required to receive the following levels of training as appropriate for their respective positions:

Minimum Levels of Training

- IS-700 NIMS Awareness Course
- IS-800 National Response Framework
- ICS 100 – ICS-400 Incident Command System (ICS)
- IS-701 Multi-Agency Coordination System (MACS) Course
- Discipline-specific knowledge of roles and resources of the Regional Domestic Security Task Force and the role of the MAC Group

Recommended additional Training

- IS-230 Principles of Emergency Management
- G-191 EOC/ICS Interface Course
- SEOC Resource Management System Orientation