



Tampa Bay Regional Planning Council

DOAR

Development Order Amendment Report

4000 Gateway Centre Boulevard, Suite 100, Pinellas Park, FL 33782
 Phone (727) 570-5151 Suncom 586-3217 FAX (727) 570-5118
 www.tbrpc.org

DRI #116 - TAMPA TELECOM PARK CITY OF TEMPLE TERRACE

On September 21, 2006, the City of Temple Terrace rendered Ordinance No. 1187 to the Tampa Bay Regional Planning Council. The Ordinance reflects an amendment adopted by City Council on September 19, 2006.

BACKGROUND

On March 29, 1985, the Temple Terrace City Council granted a Development Order (Ordinance No. 544) to GTE Realty/Collier Enterprises for a 326-acre office/corporate park development located southwest of the Fletcher Avenue/I-75 intersection in the City of Temple Terrace. The project has received specific approval through Phase IV-a.

The Development Order has been amended a total of eight times, the latest occurring on February 23, 2006 (Ordinance No. 1162). The amendments have cumulatively: revised the phasing schedule and subdivided Phase IV; adopted a land-use equivalency matrix; altered the developer's transportation proportionate share; revised the project entitlements; allow alternative uses on Lot #2; semi-consolidated the project phases; extended the project phases; extended the Development Order expiration date by 12 years, seven months and 18-days to December 31, 2012; authorized alternative office locations on the 10.0 acre hotel parcel (Lot 7B) and/or 6.4 acre commercial parcel (Lot 7C); corrected the phasing schedule to reflect the existing 16,681 sq. ft. day care facility within Phase 1; and recognized the approved number of p.m. peak hour external trips within the Development Order to be 2,854 trips (i.e. 548 Inbound + 2,306 Outbound).

The approved phasing schedule is as follows:

| PH. BUILDOUT | OFFICE (G.L.A.) | SVC. CENTER (G.L.A.) | INDUSTRIAL (G.L.A.) | SPECIALTY RETAIL (G.L.A.) | DAY CARE (G.L.A.) | HOTEL (Rooms) |
|-------------------|--------------------|----------------------------|------------------------|---------------------------------|-------------------------|------------------|
| I (Existing) 2003 | 1,104,433 | 132,479 | 125,713 | 0 | 16,681 | 173 |
| II 2010 | 986,056 | 400,000 | 0 | 50,000 | 0 | 0 |
| III* 2010 | 400,000 | 300,000 | 100,000 | 0 | 0 | 0 |
| TOTAL | 2,490,489 | 832,479 | 225,713 | 50,000 | 16,681 | 173 |

* - Specific approval of (Revised) Phase III is contingent upon further Section 380.06, F.S. transportation analysis.

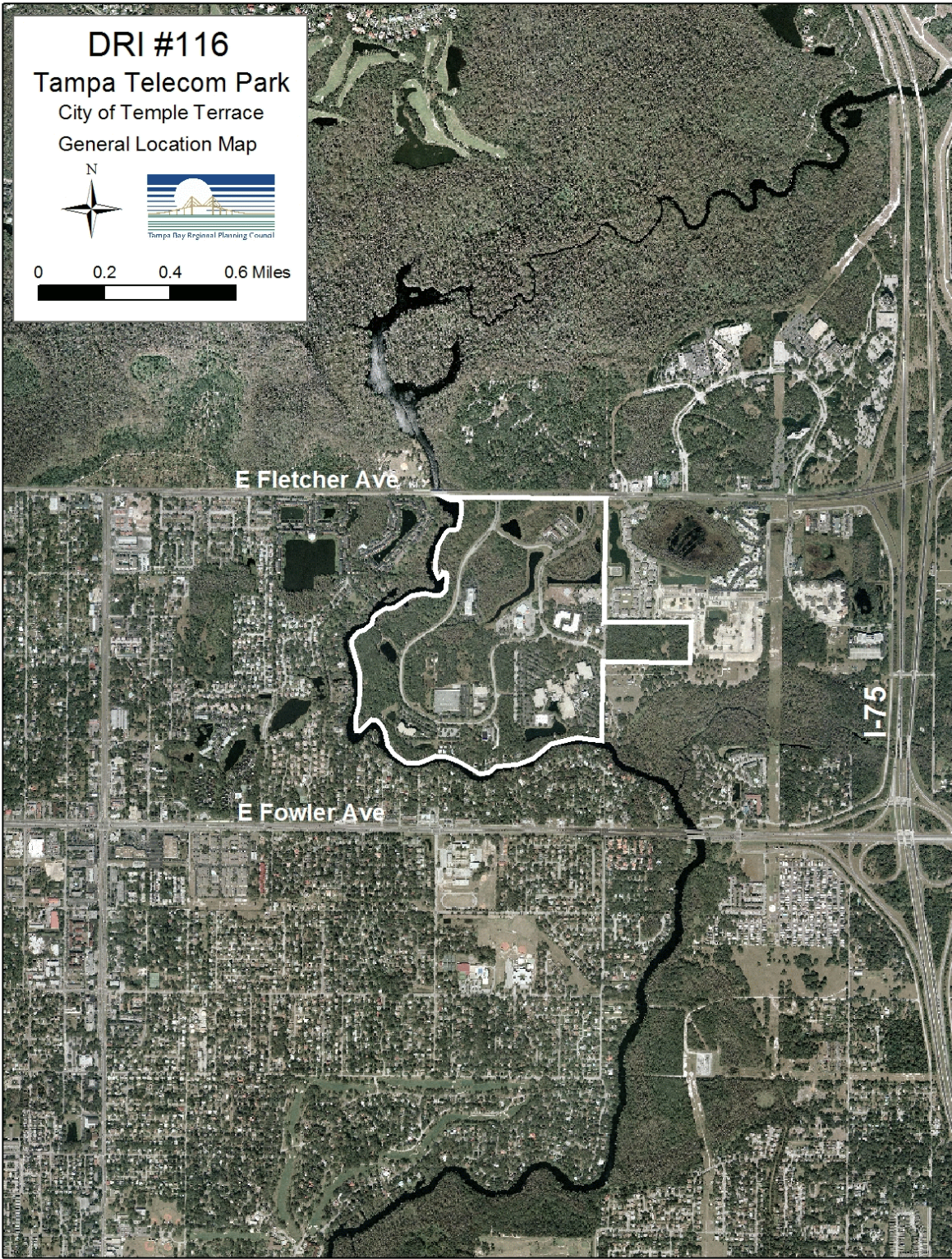
DEVELOPMENT ORDER AMENDMENT

The sole purpose of the Amendment was to authorize a revision to the Master Development Plan to allow Office as an alternative use on Lot 8 with no increase in project entitlements.

RECOMMENDATION

In accordance with Section 380.07, Florida Statutes (F.S.), this Development Order has been reviewed and determined to be consistent with the Council's *NOPC Report*, adopted on August 14, 2006, and with the Council' *Final Report* adopted on January 18, 1985.

It is recommended that the Department of Community Affairs concur with the Development Order amendment issued by the City of Temple Terrace for DRI #116 - Tampa Telecom Park.



DRI #116

Tampa Telecom Park

City of Temple Terrace

General Location Map



Tampa Bay Regional Planning Council

0 0.2 0.4 0.6 Miles

E Fletcher Ave

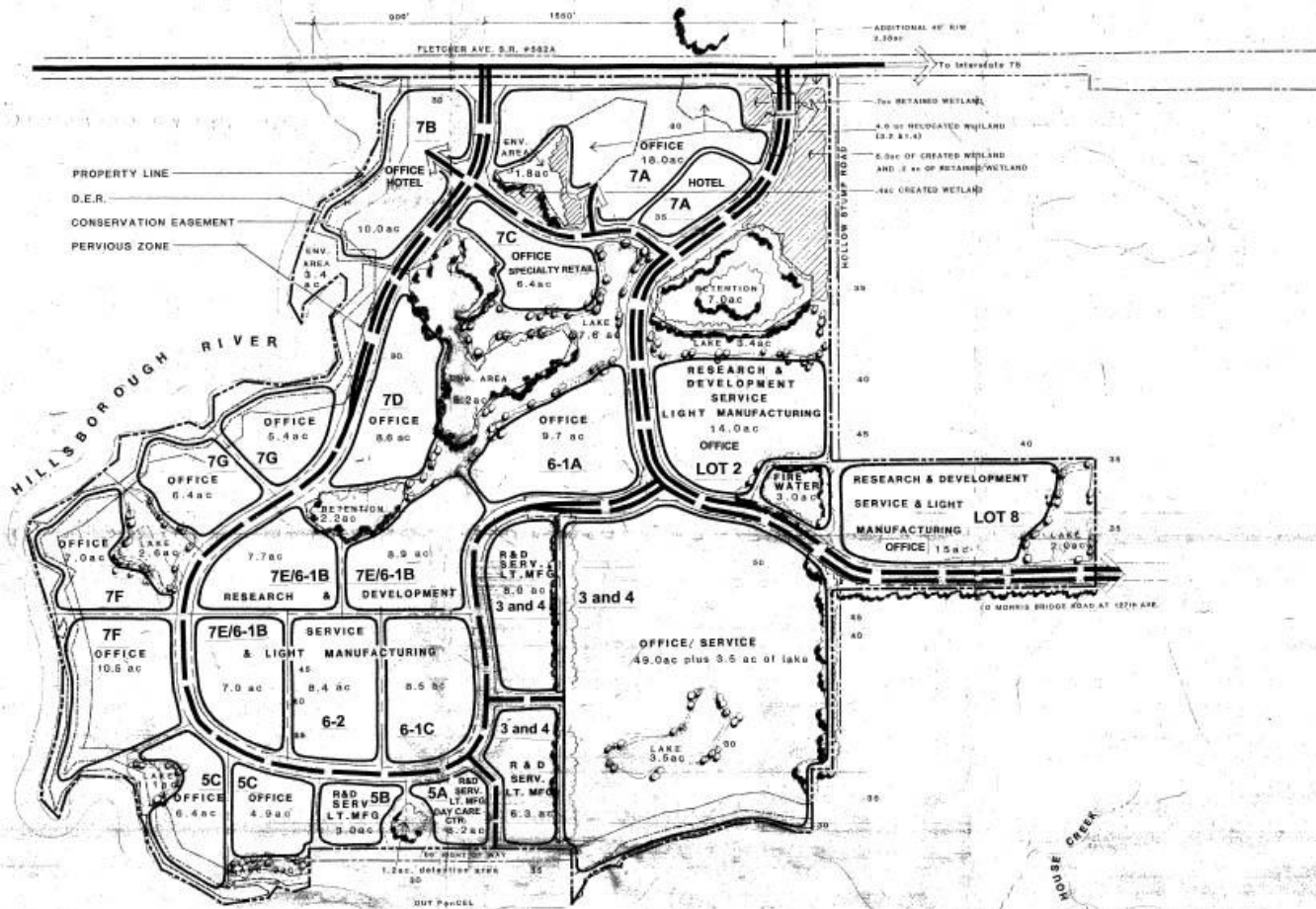
E Fowler Ave

I-75



UNIV. SOUTH FLORIDA PARK & BOAT LAUNCH

LETTUCE LAKE COUNTY PARK



PROPERTY LINE
D.E.R.
CONSERVATION EASEMENT
PERVIOUS ZONE

LAND USE SUMMARY

| USE | ACRES |
|---|-----------------------|
| MAJOR OFFICE / SERVICE SITE | 49.5 plus 3.5 w/ lake |
| OFFICE SITES | 76.3 |
| COMBINATION SITES Research & Development, Service & Light Manufacturing | 90.0 |
| COMMERCIAL | 215.6 |
| HOTEL - Residence Inn | 6.4 |
| FIRE & WATER | 10.0 |
| TOTAL NET DEVELOPABLE ACRES | 236.3 |

OTHER USES

| | |
|---|-----------------------------|
| ROADS | 28.20 |
| ADDITIONAL R/W, FLETCHER AVE. | 2.40 |
| LANDSCAPE BUFFER & OPEN AREA | 6.15 |
| ENVIRONMENTAL AREAS (HEMT & 43500-12/10/05) RIVER CONNECTED | 18.05 |
| RETENTION AREAS | 39.90 (1.2% of net dev. ac) |
| TOTAL OTHER USES | 90.7 |
| TOTAL SITE AREA | 326.0 |

NOTE: RETENTION AREAS INCLUDE THE FOLLOWING:

| | |
|---|-------------|
| 1. Environmental areas, disconnected from river | 11.0 |
| 2. Small retained wetland areas | 0 |
| 3. Lakes | 21.1 |
| 4. Detention areas | 1.2 |
| 5. Created wetlands mitigation areas | 5.7 |
| TOTAL | 39.9 |

GTE/COLLIER-326
Temple Terrace
Hillsborough County, Florida
DEVELOPMENT PLAN

REVISED MAP H
July 6, 2005
September 22, 2005
October 14, 2005
December 15, 2005
January 4, 2006
June 30, 2006

Prepared by:
Murphy LaRocca Consulting Group, Inc.
101 East Kennedy Boulevard
Suite 3020
Tampa, FL 33602